

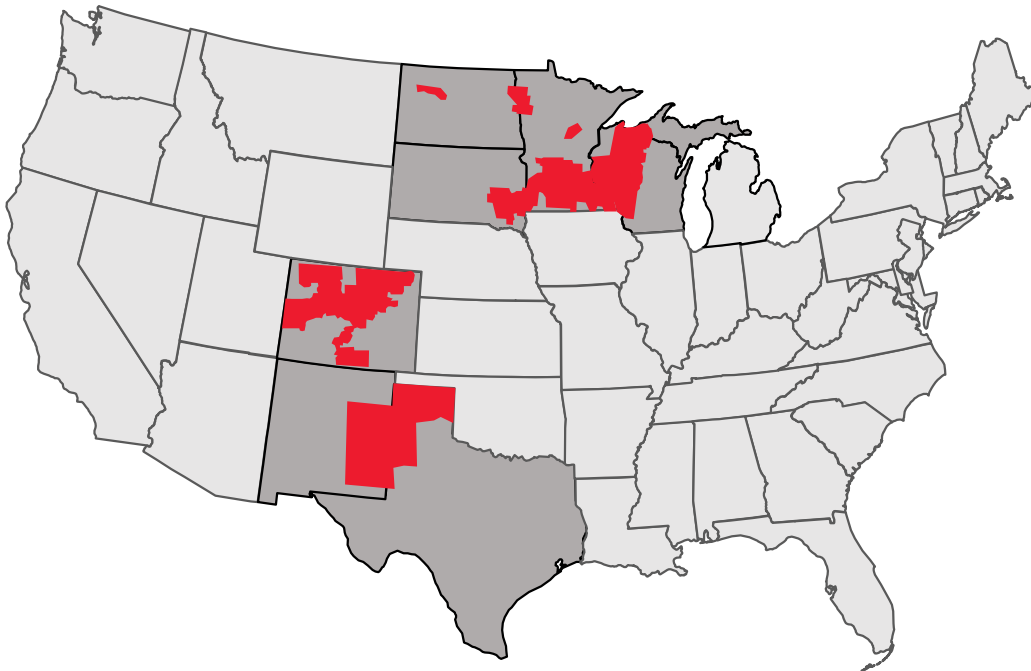


ANS Webinar Coal to Nuclear

Xcel Energy
October 2022

Patrick Burke
VP Nuclear Strategy

Xcel Energy



Serving eight states

3.7 million electricity customers

2.1 million natural gas customers

Nationally recognized leader:

Wind energy

Energy efficiency

Carbon emissions reductions

Innovative technology

Storm restoration

2020 Data

Xcel Energy's Two Nuclear Generating Plants

Prairie Island



- 2 pressurized water reactors
- Unit 1 (1973); Unit 2(1974)
- Licensed through 2033/2034
- 1,100 MW
- 800 Employees; 1,000 more during refueling

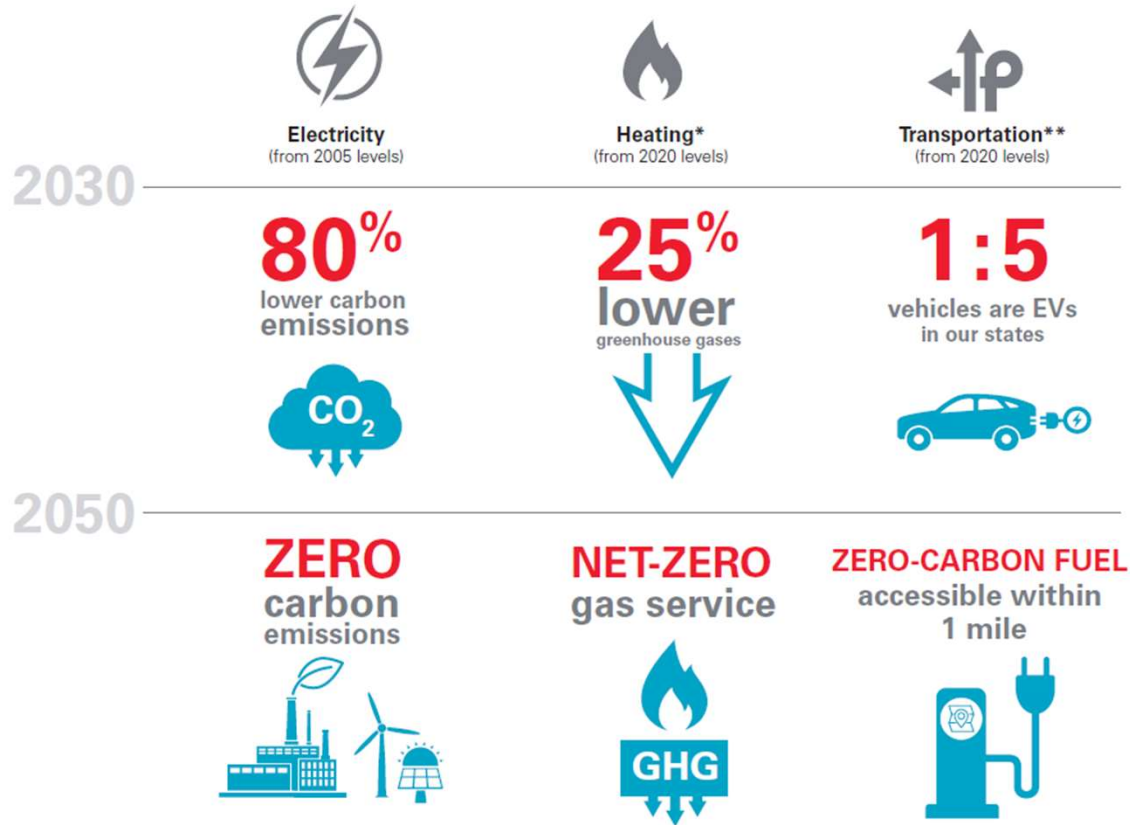
Monticello



- 1 Boiling water reactor (1971)
- Licensed through 2030
- 671 MW
- 650 employees; 800 more during refueling

Net-Zero Energy Provider by 2050

Goals that cover all the ways our customers use energy



*Spans natural gas supply, distribution and customer use

**Includes the Xcel Energy fleet; zero-carbon fuel is electricity or other clean energy

Leading the Clean Energy Transition

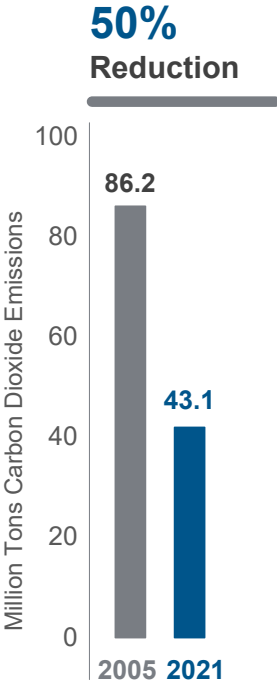
2005



2021

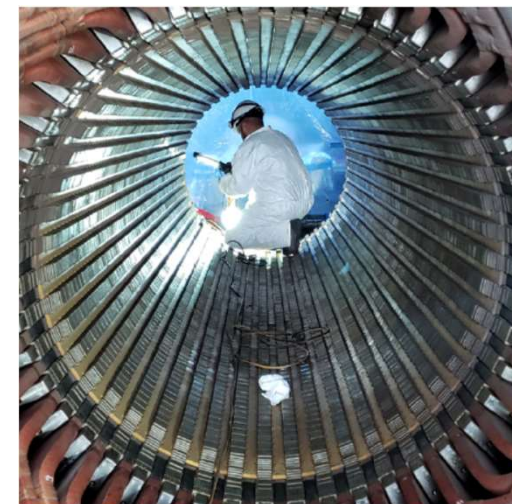


2030 Estimate



Coal Transition Plan

- Announced plant retirements
 - Hayden 2 in 2027
 - Hayden 1 in 2028
 - Craig 1 in 2025*
 - Craig 2 in 2028*
- Other actions through CEP
 - Pawnee conversion to natural gas by 2026
 - Comanche 3 to retire by 2031; reduce operations 2025
- Workforce transition and community assistance plans for host communities



* Public Service has a 9.8% ownership share in both Craig 1 and 2

**Comanche 1 to retire in 2022 and Comanche 2 in 2025 per the Colorado Energy Plan

NuScale Technology and Xcel Energy

- Explore feasibility of Xcel Energy serving as plant operator for NuScale reactors
- Creates framework for negotiated agreements on how Xcel Energy and NuScale might work together.
- Xcel Energy is providing services related to certification and developing plans for serving as plant operator.

