

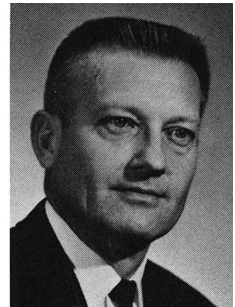


## AUTHORS – AUGUST 1976

### CRITICALITY ARRAY DATA AND CALCULATIONAL METHODS

#### C. L. SCHUSKE

C. L. Schuske (MS, physics, University of Southern California) is nuclear safety manager at Rockwell International, Atomics International Division, Rocky Flats Plant. His areas of interest are critical mass physics and process plant nuclear criticality safety.



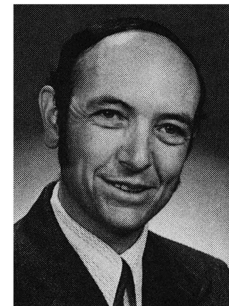
#### HUGH C. PAXTON

Hugh Paxton (PhD, physics, University of California, 1937) joined the critical assemblies group of the Los Alamos Scientific Laboratory in 1948. He worked in nuclear physics at the College of France and Columbia University, with gaseous diffusion technology at the SAM Laboratory and Oak Ridge National Laboratory, and on precision-casting development at the Sharples Research Laboratories.



#### DOUGLAS C. HUNT

Douglas C. Hunt (MS, environmental engineering, Colorado State University, 1976; PhD, physics, University of Colorado, 1961) has been with the Rocky Flats Plant Nuclear Safety Laboratory since 1963. His research has included both experimental and computational criticality studies and investigations of radio-aerosol transport.



#### DEANNE DICKINSON

Deanne Dickinson (PhD, mathematics, Massachusetts Institute of Technology) is a research specialist at the Rockwell International, Atomics International Division, Rocky Flats Plant, working on computer calculations for nuclear safety.



#### G. ELLIOTT WHITESIDES

G. E. Whitesides (BS, nuclear engineering, North Carolina State University, 1960) is head of the Nuclear Engineering Applications Department of the Computer Science Division at the Oak Ridge National Laboratory. He has participated in the development of neutron and gamma-ray transport methods for many years.

