

F.N. Anderson & Assoc., Forest, VA (EL, E, EQ, FI, FP, P, PP, RL, SN, SR, SH, ST, SL)
 Applied Analysis Corp., Reading, PA (DE, EQ, SN, SR, SH, SI, T, WH)
 Atrix International, Burnsville, MN (A)
 Attenuation Environmental Co., Seattle, WA (E, W)
 ◆Banda Group International, LLC, Chandler, AZ (RS, RC, SN)
 ◆Bechtel, (Bechtel Power), (Bechtel Nuclear, Security & Environmental), (Bechtel National), Reston, VA (DE, ED, ET, EQ, P, SN, SP, SE, ST, SL, SS, T, WH)
 Bevelacqua Resources, Richland, WA (E, RS, RC, SN, SR, SH)
 BHI Energy, Weymouth, MA (E, FE, P, RC, SC)
 BlackStarTech, Davenport, IA (RS)
 Black & Veatch, Overland Park, KS (C, DE, ED, ET, E, EQ, G, H, N, P, PP, RL, RS, RC, SN, SP, SE, SH, SC, SI, ST, SL, T, WH)
 ◆Blue Wave AI Labs, West Lafayette, IN (FP, PP, SN, SR)
 Boston Government Services, LLC (BGS), Oak Ridge, TN (DE, ED, E, EQ, P, PP, RS, RC, SN, SP, SR, SE, SC, ST, SL, V, W)
 Burns & McDonnell, Kansas City, MO (DE, ED, ET, E, EQ, FE, FM, FI, FR, G, H, M, P, PP, RL, RC, SN, SP, SR, SE, SH, SC, SI, ST, SL, SS, T, VC, V, W, WA, WH)
 BWX Technologies, Inc., Lynchburg, VA (C, DE, E, FM, FI, FR, FP, LP, M, N, P, RS, RC, SN, SP, SR, SE, SH, ST, SL, T, VC, V, W)
 Cabrera Services Inc., East Hartford, CT (EL, H, M, RA, SC)
 CAEN SyS, Viareggio, LU, Italy (E, FP, SN, W, WA)
 Canoil Canada Ltd, Mississauga, Ontario, Canada (L)
 Consolidated Power Supply, (Div. of Consolidated Pipe & Supply Co., Inc.), Birmingham, AL (C, DE, FM, FR, M, P, SE, ST, SL)
 Constellation PowerLabs, Coatesville, PA (C, EL, E, EQ, FE, FM, FR, M, RC)
 Container Technologies Industries, LLC, Helenwood, TN (FI, SH)
 CS-2 Inc., Grand Island, NY (E, RS, RC, SP, SC, T, W)
 CTR Technical Services, Inc., Manitou Springs, CO (RS, SN, SR, SH)
 Curtiss-Wright Nuclear Division, EnerTech, Brea, CA (DE, L, RL, RS, RC, SE, WH)
 Curtiss-Wright Nuclear Division, NETCO, Danbury, CT (EL, T)
 Curtiss-Wright Nuclear Division, QualTech NP, Cincinnati, OH (DE, E, EQ, RL, SN, SE, SH, ST, SL, V)
 Curtiss-Wright Nuclear Division, Scientech, Idaho Falls, ID (C, ED, ET, EQ, FI, FR, FP, M, P, PP, RL, RS, RC, SN, SP, SR, SE, SH, SC, ST, SL, T, V)
 DCS Systems, Inc., Simsbury, CT (FP, RC)
 The Delphi Groupe, Inc., Austin, TX (DE, E, RS, RC, SN)
 Deytec, Inc., Ashburn, VA (RS, SN, SP, SR)
 Dominion Engineering, Inc., Reston, VA (C, FD, DE, EQ, FM, FI, FR, FP, H, M, PP, RL, SN, SR, ST, T, VC, W, WA, WH)
 DW James Consulting, LLC, North Oaks, MN (SH, VC, W, WA)
 ECU Corporation, Cincinnati, OH (SE)
 Electric Motor and Contracting Company Inc., Chesapeake, VA (ED, FE, V)
 Elmore Engineering Services, Inc., Boyertown, PA (DE, FI, P, SP, SE)
 EmmEn Marketing Consultants, Pune, Maharashtra, India (LP)
 Empyrean Services, Sewickley, PA (RL, RS, SE)
 Enercon Services, Inc., (Talisman Div.), Kennesaw, GA (E, RS, RC, SN, SP, SR, SI, W)
 Energy Resources International Inc., Washington, DC (FP, W)
 ◆EnergySolutions, Salt Lake City, UT (DE, SN, SH, SC, W)
 Energy Steel, Rochester Hills, MI (C, DE, EQ, FE, FM, FI, FR, LP, M, P, SE, SH, ST, SS, VC, V, WH)

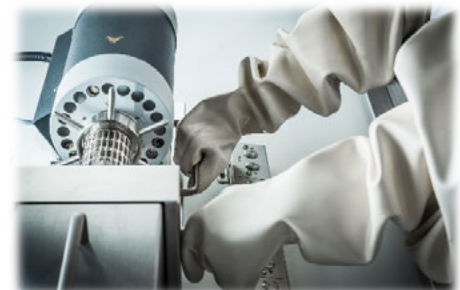
Engineering Planning and Management, Inc., Framingham, MA (DE, ED, EQ, RS, SN, SR)
 Equipos Nucleares, S.A., S.M.E, Maliaño (Cantabria), Spain (SL)
 ETAP - Operation Technology, Inc., Irvine, CA (ED, ET, RL)
 EXCEL Services Corporation, Rockville, MD (DE, E, EQ, FI, FP, PP, RS, RC, SN, SP, SR, SH, SI, SL, T)
 ◆Framatome Inc., (North American Headquarters), Lynchburg, VA (C, DE, ED, ET, EL, E, EQ, FE, FM, FI, FR, FP, LP, M, N, P, PP, RL, RE, RS, RC, SN, SP, SR, SE, SH, SC, ST, SL, SS, T, VC, V, W, WA, WH)
 Fuel Tank Maintenance Co., LLC, Cookeville, TN (FP)
 GE Hitachi Nuclear Energy, Wilmington, NC (DE, EL, EQ, FM, FP, M, P, PP, RL, RS, SR, SE, ST, SL, T, VC, V, WH)
 GEI Consultants, Inc., Woburn, MA (E, G, H, RS, SE, SC, SI, W, WA)
 GEL Solutions, LLC, (A Member of The GEL Group, Inc.), Charleston, SC (SE)
 ◆General Atomics Electromagnetic Systems, San Diego, CA (EQ)
 Gen IV Nuclear Energy Systems Services, Rockville, MD (DE, FP, RS, RC, SN, SP, SR)
 Geovariances, Avon, France (E, G, H, SC)
 GLSEQ, LLC, Huntsville, AL (DE, ET, E, EQ, FE, LP, N, RC, SN, SE, V)
 GSE DP, (DP Engineering), Fort Worth, TX (DE, ED, ET, EC, E, EQ, FE, FM, FP, P, PP, RS, SN, SP, SR, ST, SL, T, V, W, WA)
 GSE Systems, (GSE Solutions), Columbia, MD (FP)
 Hayward Tyler Inc., Colchester, VT (DE, SE)
 HF Controls Corp., (Sub. of Doosan Heavy Industries & Construction Co., Ltd.), Carrollton, TX (EQ, SN, SE)
 ◆Holtec International, Camden, NJ (EQ, FI, P, SE, SH, ST, SL, T, V, WH)
 Hoskin Scientific, Oakville, Ontario, Canada (E, G, ST, SL, T)
 Idaho National Laboratory, Idaho Falls, ID (DE, RS, SN, SP, SR, SE, SH)
 Idom Consulting, Engineering, Architecture S.A.U., Bilbao, Spain (DE, ED, FI, FR, G, M, P, RL, SN, SE, SH, SC, ST, SL, T, VC, WH)
 ILD, Inc., Baton Rouge, LA (P, PP, RC, ST, T)
 Imperia Engineering Partners, LLC, Milford, MA (DE, ED, ET, EQ, FE, FM, FI, FR, M, P, PP, RL, RS, RC, SN, SP, SE, ST, SL, SS, T, V, WH)
 INGEROP Conseil et Ingenierie, (a company of INGEROP Group), Cebazat, France (FI, G, SC, SL)
 Interdevelopment, Inc., Falls Church, VA (RS)
 ISOFLEX USA, San Francisco, CA (EL, FP, WA)
 Joseph Oat Corp., Camden, NJ (FI, M, ST, T, V, WH)
 Kinectrics Inc., Toronto, Ontario, Canada (C, ED, ET, EQ, FE, FM, FR, M, PP, RL, RE, RS, RC, SE, SC, ST, SL, T, V, W, WA)
 Kinemetrics, Inc., Pasadena, CA (SE)
 Lambda Technologies, Cincinnati, OH (FM, FI, ST)
 Liburdi Automation Inc., Dundas, Ontario, Canada (FM)
 Lucideon, Schenectady, NY (C, FE, FM, FR, M, RL, RC, ST, T)
 Materials and Chemistry Laboratory, Inc., (MCLinc), Oak Ridge, TN (A, C, DE, EL, E, FM, G, M, SN, SP, T, W, WA)
 Matom Ltd., North Wales, United Kingdom (DE, EL, FM, M, RE, SC, WA)
 Meridian Services Group, (formerly Work Management, Inc., and High Bridge Associates, Inc.), Chattanooga, TN (PP, RS, RC, SC)
 Mirion Technologies, Inc., Atlanta, GA (SN, SP, SR, SH, W)
 ◆NAC International Inc., Peachtree Corners, GA (FI, FP, SE, SH, SL, T)
 NAC LPT LLC, Mars, PA (E, SC, W)
 National Technical Systems (NTS), (Nuclear Engineering & Test Services), Huntsville, AL (EQ, FI, M, T)
 Navarro, Oak Ridge, TN (G, RL, SN, SC, W, WA)
 ◆Netzsch Instruments North America LLC, Burlington, MA (C, EL, FP, ST, T)

NETZSCH

Proven Excellence.



NETZSCH Instruments is the leading supplier of thermal analysis and thermophysical property instrumentation to the nuclear industry. Including robust modular instruments designed for gloveboxes & hot cells.



nib_sales@
netzsch.com
 (781)272-5353