



ROS

REMOTE OCEAN SYSTEMS

A LEADER IN NUCLEAR INSPECTIONS

REMOTE OCEAN SYSTEMS is a leader in the design and manufacture of reliable, radiation-tolerant lighting and inspection systems for fuel pool and reactor visual inspections since 1975. Our product line includes rad hard cameras, high intensity pool lighting and high accuracy, robust pan & tilt positioners. Our cameras offer high resolution and high-definition output with optical zoom for close-up inspections. We offer both stationary pool lighting with LED or high-pressure sodium lamps plus LED drop lights. Our new CEX-HD Inspection System combines a high-definition camera with dual LED lights for brilliant, HD images and includes a compact, state-of-the-art IC-Link Controller that features system



New compact design IC Link Control Box includes self-monitoring feature and connects to a USB Joystick for fast, easy and accurate camera control.

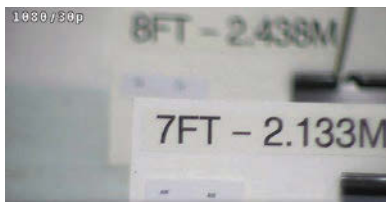
diagnostic capability and links to a joystick for precise control over zoom, focus and exposure as well as control of lighting and camera operation. Remote Ocean Systems offers a fully staffed engineering department to help with your special inspection requirements.

*For more information on the new CEX-HD Inspection System
Contact: sales@rosys.com or visit www.rosys.com*



Take a Close Look at The New ROS CEX-HD Inspection System

A State-of-the-Art High Definition Camera and Control System that Helps You See and Prevent Costly Downtime Problems.



■ *The CEX-HD camera features 1080p resolution and 30:1 zoom capability.*



■ *New compact design IC Link Control Box includes self-monitoring feature and connects to a USB Joystick for fast, easy and accurate camera control.*