

the critical role nuclear power has to play in helping tackle the U.K.'s energy needs, meet climate change targets, and level up the economy through green growth and job creation.”

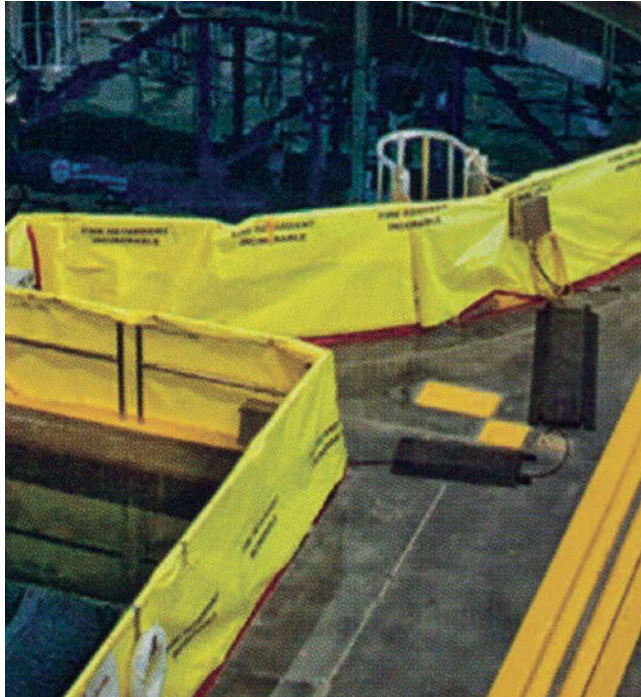
In the second letter, dated September 28, Hawthorne informed the inspectorate that his firm “has been engaged in discussions with third parties that have expressed an interest in progressing with the development of new nuclear generation at the Wylfa Newydd site in Anglesey, Wales. These discussions are still at an early stage, and it is felt that a short deferral would allow time for Horizon and those interested parties to determine whether, and if so how, the Wylfa Newydd DCO project could be taken forward in Hitachi, Ltd.’s absence. Part of that consideration would relate to the possibility and benefits of seeing the current development consent order application through to conclusion, and any issues that would need to be addressed.”

Formed in 2009 to develop new nuclear power

stations in the United Kingdom, Horizon Nuclear Power was acquired by Hitachi in November 2012. The following year, Horizon announced plans to construct two advanced boiling water reactors next to the now-shuttered Wylfa nuclear power station on the island of Anglesey, off the northwest coast of Wales. The new plant would be called Wylfa Newydd—Welsh for “New Wylfa.”

In December 2017, U.K. regulators approved Hitachi-GE Nuclear Energy’s ABWR design following the completion of the required generic design assessment. In 2018, Hitachi entered into negotiations with the British government regarding various options for governmental support of the Wylfa Newydd project, including the potential for equity and debt investments.

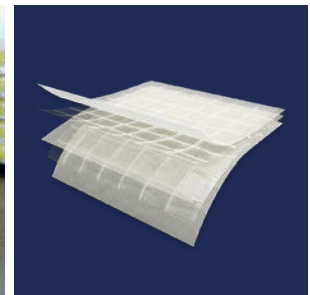
In January last year, however, Hitachi announced that it was suspending the project after failing to reach a financing agreement with the government. ☒



OUTAGE MANAGEMENT
FLOOR PROTECTION & EQUIPMENT COVERS

REEF
INDUSTRIES INC.

1.800.231.6074
GRIFFOLYN.COM



**NFPA 701 CERTIFIED • FME PROTECTION
HOT WORK AREAS • ON-SITE STORAGE
NO DELAYS IN OUTAGES
OUTDOOR TRANSPORTATION
STOCK ROLLS READILY AVAILABLE**